

© 2013
All Rights Reserved. Only.



Dimension next

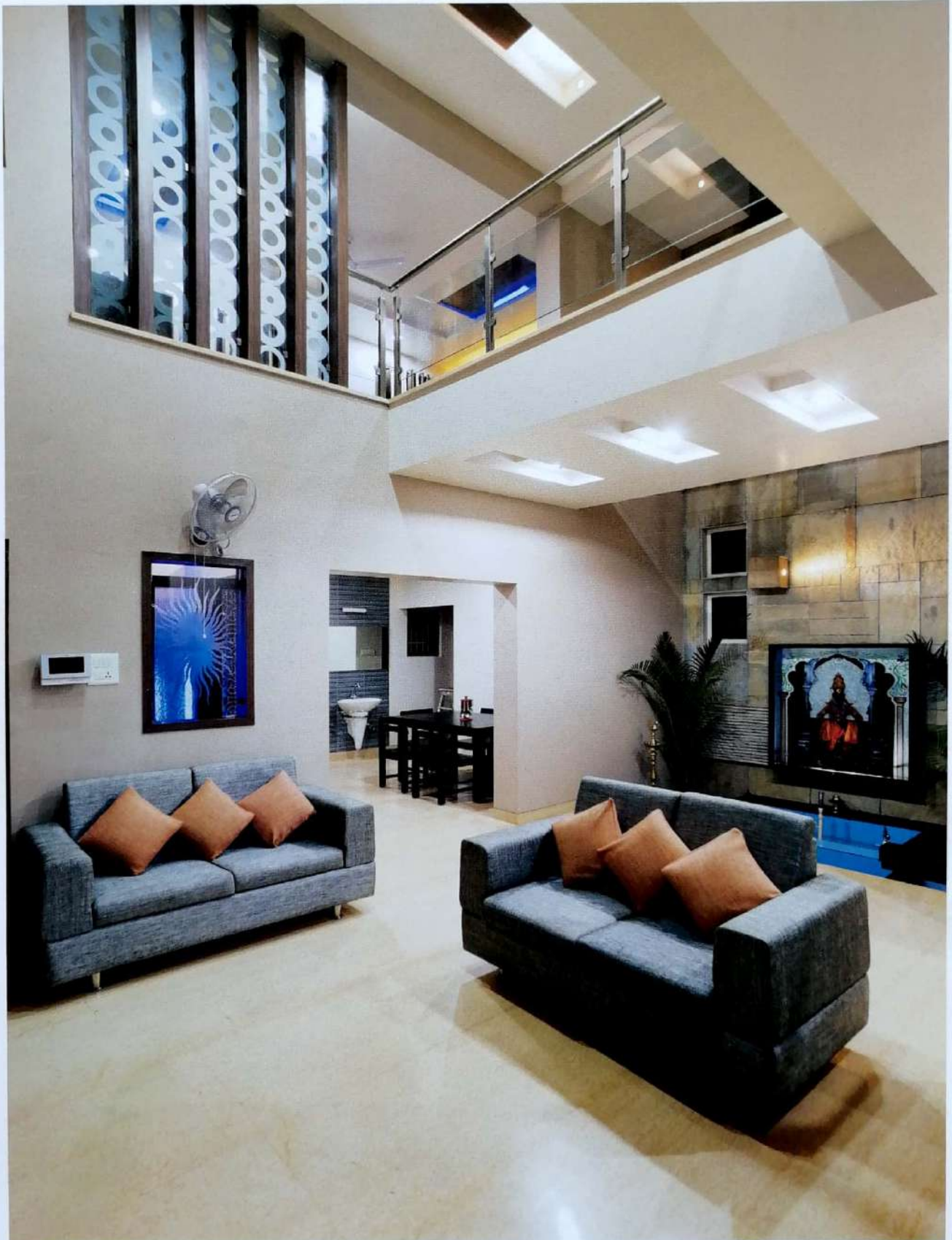


an angle beyond...

Sophisticated Synthesis of Architecture and Interior: Mr. Patil's Residence

'Home is a name, a word, it is a strong one; stronger than magician ever spoke, or spirit ever answered to, in the strongest conjuration'. Living up to this manifestation of home has its own challenges and opportunities for an

architect. The delicate balance of architect's own vision and client's requisites is an imperative for achieving a win-win result in the end. Mr. Patil's residence at Kolhapur accorded this ingenious opportunity where a contemporary design philosophy took note of Indian family values and cultural beliefs in a most visible and functional way.



Interior Design

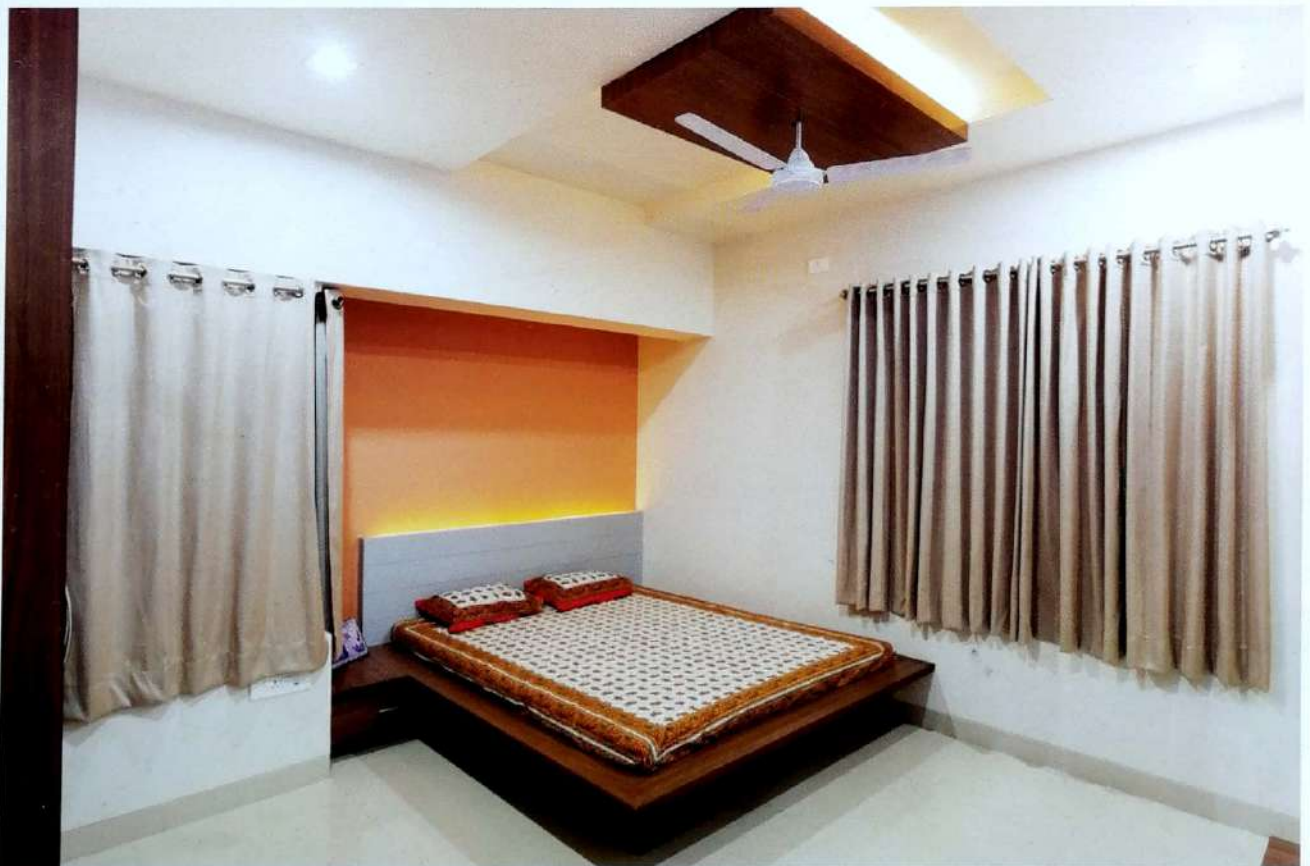
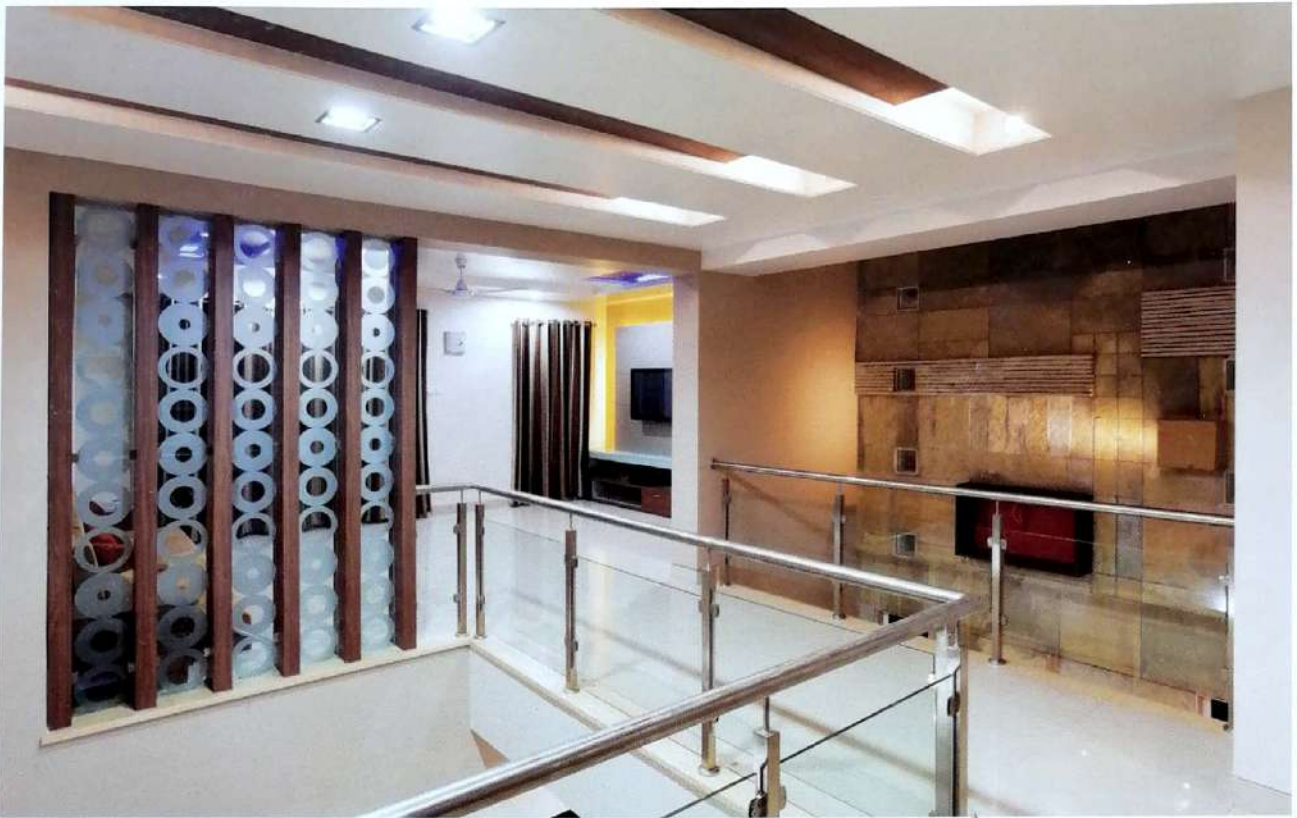


The south-east facing wedge-shaped plot, spread over 3,600 sq. ft., was narrow towards the front. The requirements of 5-member family were clear: 4 bedrooms, bathrooms, family hall, living room, dining area, kitchen, terraces and basement.

Keeping in view of decorating business background of the family, the basic need was large volumes and a dramatic ambience to the spaces. The client came up with rather unusual request of creating a sense and means of belongingness for the elderly member of the family who



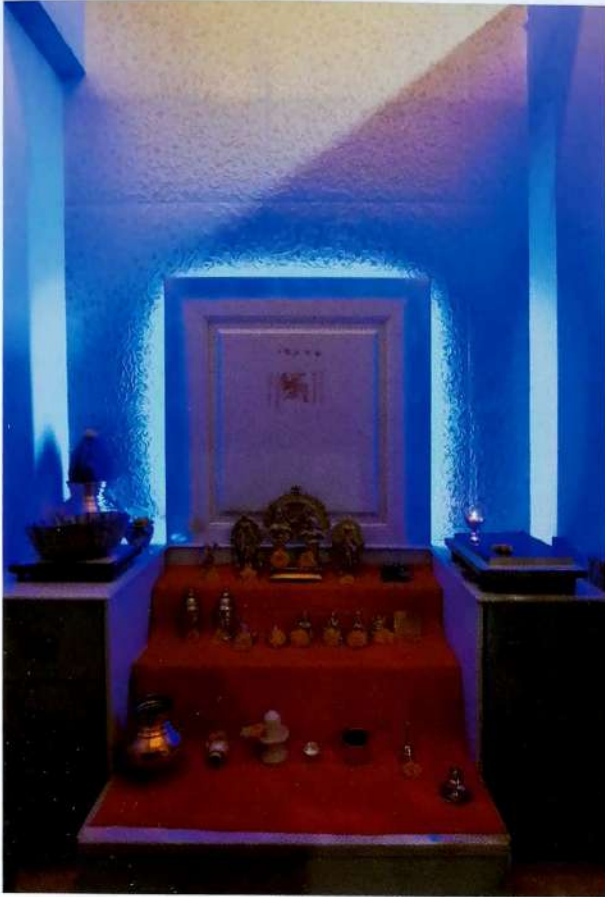
Interior Design



shall not remain lost in a visibly large house like such. This unusual request set the designers thinking, and the result was the double-height living room and the overlooking gallery from the family room – something that allows a natural interaction not only between the two storeys but generations too.

Challenges were coming thick and fast in the guise of considerable budget constraints as well as odd plot layout. So working within a tight budget as well as dealing with plot characteristics opened up an intelligent set of options that could fit the bill. Interestingly the result was a deceptively simple house where every aspect was explored to achieve synthesis between the architecture and the interior.

Interior Design



The area and shape of the plot influenced the planning approach. The contour slope of nearly 1.2m above the road required bedrooms to be placed on the rear side at a level higher than the common areas to give enough headroom and slope was used as a basement for common functions.

In an attempt to create a home that weds comfort and function, natural light was tapped and allowed to flow

through the large windows in all rooms and from the skylight in the living area. In the evening, mono-point light fixtures provide multidirectional sources of illumination. Ample cross ventilation, easy access to terraces and the views of the greenery outside ensure that the residents feel close to nature. As far as colours, materials and textures go; simple and sober was preferred. External walls were clad with Shahabad and stone-finish tiles achieving cost efficient elegance.

Beyond the spacious family hall on upper floor is a terrace with rustic flooring. A sliding folding glass door opens up to connect the two spaces, while ivory vitrified flooring helps the space to open out. This room has a home theatre and comfortable floor seating with a raised platform suitable for informal get-togethers. The flight of steps continues to the level above, leading to a large open terrace - ideal for relaxing or having a party. This house is well protected with security systems and multi-function detectors are installed on windows and skylights.

For living, dining, staircase and kitchen, Italian marble gives a lavish touch and make the areas more inviting. All bedrooms and the family hall have ivory vitrified tiles to exaggerate the volume of the room. The courtyard in the living room is clad with locally available Shahabad stone imparting a trendy look with its patterns. At the living room level, a water body with three water umbrellas provides a peaceful ambience. The image of Lord Panduranga etched on glass, with a backlight, fills the space with serenity.

Client's insistence upon incorporating eco-friendly elements in the house presented another worthy opportunity to let nature in while keeping running expenses to the minimum. Apart from tapping of natural day lighting optimally, LED lights, Solar water heating system, Rain water harvesting underlines the eco-friendly status of the house.

By integrating all the essential design elements a sense of cohesiveness has been achieved while the eco friendly measures put icing on the cake. The open and clutter-free spaces pleasingly merge to create a comfortable and functional home for its occupants to enjoy eternally.

